



The Heavens Declare the Glory of God...
 The Law of the Lord is Perfect, Restoring the Soul
 Psalm 19:1a,9a



7 - The Ice Age
Notes Available at: IfMyPeople.US

Review of The Flood Pt 2

- Piled Up Mud and Rocks
- Sorting it Out
- Newer Views of Piled Up Mud & Rocks
- Dead Things in Piled Up Mud & Rocks
- Floating Forests v Spirit Lake

Stratigraphic Column –

Rocks & gravel on bottom, then sand, shale,
 limestone/dolomite

(Old) Long Age stratigraphy

4 main periods subdivided into period, and epoch

(New) Six Sorted Megasequence

Dearth of Fossils due to volume, water action, and response
 to flooding

Petrified forest formation based on waterlogged trees
 sinking upright simulating living forests

What We Want to Discuss

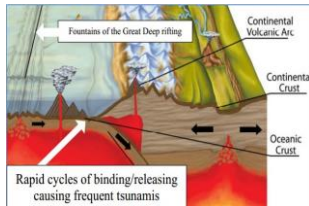
- Chain of Events Leading From Subduction to Ice Age
- Original Cold Ocean Floor Subducted - Potential Energy Consumed
- Ice Age HEAT
- Hot Oceans
- Evaporation
- Aerosols
- Time

What We Want to Discuss

- Atmospheric Intensity (Energy) Went From Violent to Relative Calm
- There Was Only One Ice Age After the Flood
- Mass Glacier Formation Has Specific Hard-to-Duplicate Requirements

Chain of Events

- Pangea
- Fountains of the Great Deep
- Subduction
- Tsunamis & Earthquakes
- Vulcanism



Original Creation was the supercontinent Pangea

The Fountains of the Great Deep were ruptures in the crust
 bringing up basalt that pushed the sea floor apart causing
 massive earthquakes

The sea floors were pushed into other plates causing one
 side to be shoved down into Earth's mantle causing more
 volcanos and tsunamis

Video Notes

- "From whose womb has come the ice? And the frost of heaven, who has given it birth? Job 38:29
- Lot lifted up his eyes and saw all the valley of the Jordan, that it was well watered everywhere—this was before the LORD destroyed Sodom and Gomorrah—like the garden of the LORD, like the land of Egypt as you go to Zoar. Gen 13:10

Glaciers Much Smaller Now

H.e.a.t.

Took 1000 years to Re-Cool

High energy after Flood, cause for Ice Age

Hot Magma 40,000 mile chain warms up oceans (to about 78)

Cold continents from aerosol cooling

Models Show Precipitation Rates Caused 5k-6k thick < 500 years 300 to melt at end

Time of Job womb...ice

Moister in past, 3 to 4x than today.

Genesis tells of a lush rift valley offered to Lot by Abraham

Woolly Mammoths Lived in a Temperate Zone near Artic Ocean,

People moved during Changing Times, Lower Sea Level,

Climate Change

Conventionalists: A Belief of Instability - Oscillating; an Unstable Climate

Creationists: Climate is Very Stable

Ice Core Interpretation is Seen Differently

Milankovitch Theory: Correlation Between Orbit Wobbling Causes Ice Age Periods

Conventional Science Seeks to Model Ice Ages After Present Processes (The Present is the Key to the Past" uniformitarianism thinking)

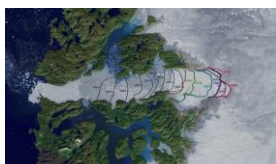
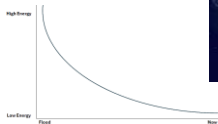
Greenland Based Ice Cores Show Evidence of the Flood Volcanic Aerosols etc.

B17 & P38 Lost Airplane Story Illustrating Accelerated Ice Deposition Due to Gulf Stream Warm Water Influence

Creation Scientists Can Ask "Unorthodox" Questions

From High to Low

- Volcanism
- Heat Difference
- Cold to Warm Seas
- Rainfall
- Things Even Out



Volcanism - Ruptured seafloor spawning volcanic energy mid ocean and along plate boundaries

Heat Difference - -From Basalt & Cold Seafloors caused great potential energy

// Illustrate pot energy with an egg atop a skyscraper. When dropped and hits the ground, the splat becomes kinetic energy)

Cold-2-Warm - This potential resulted in hot seafloors warming the ocean

Rainfall - Evaporation transferring warm water to the now-cold atmosphere bringing snow, much by hypercanes and plain rain.

Even-Out - Over time the energy levels have dropped. But this is still occurring today glaciers continue to recede from reduced evaporation-to-rainfall. Slide shows a Greenland glacier retreat 1851 through 2009. Credit NYT

Bringing the **HEAT** to Make an Ice Age

- Hot Oceans
- Evaporation
- Aerosols
- Time
- One-Time



Hot Oceans – Heated by the hot magma (basalt) from Earth’s mantle (fountains of the deep)

Evaporation – Oceanic evaporation from warm (around 78+ degrees, compared with modern temps, around 3 degrees Celsius average.) and steam entrained by the fountains. Hurricanes are a way to convert distill sea water into precipitation. The flood had two hypercanes, one over Antarctica, another over Hudson Bay in oh Canada.

Aerosols – Ash & other debris from volcanic debris from the fountains and other volcanos.

Time – As aerosols blocked the atmosphere, the continents cooled resulting in warmer winters, and cooler summers. Over time, precipitation in the form of snow accumulated on the margins and higher areas, leading to glaciation.

One-Time - All these elements are necessary to trigger an ice age event; conventional climatology has difficulty showing how this was possible:

If earth cooled somehow, then oceans would be too cool. If earth was hot, snow would not fall, rather water. Earth was designed with feedback mechanisms to control much of what we take for granted, CO2 regulation from tree and plant life, heat & cold in cloud formation (a rise in temperature results in more clouds bringing cooler temperatures, for example.) There are many other examples.

Source: Carved in Stone Dr. Tim Clarey, ICR Kindle location 4605, 4647

Our Protector

He who dwells in the shelter of the Most High Will abide in the shadow of the Almighty. I will say to the LORD, “My refuge and my fortress, My God, in whom I trust!”
--Psalm 91:1

Anthropic Principle: Proton Mass, gravitational force, distance from sun, hydrogen bond, the moon’s orbit, gravity, magnetic field of earth, etc.

He does the same in our lives, even in bad times.

“No temptation has overtaken you but such as is common to man; and God is faithful, who will not allow you to be tempted beyond what you are able, but with the temptation will provide the way of escape also, so that you will be able to endure it. 1 Cor 10:13



Gen 8:14-17
Flood Passengers & Animals Debarf Flood Day 371

Gen 8:6
Noah Opens Ark Window (Day 190)

Gen 8:5
Massive erosion of previous sediments
Much runoff adding to continental shelves
Channelized Flow forms Grand Canyon

Gen 8:3-4
Water Recedes Steadily
Ark rests on mountains of Ararat (Day 150)

Grand Canyon

